

The photographs has been taken during seven day at the end of november, just before the rainy season, so there's still a lot to discover.

Images and text: © Mauricio Pacheco Suarez
<http://entrepndientes.com>
 Except L. bolivianus (2° image): © Oscar Gavira

A big thanks to Steffen Reichle and Ignacio de la Riva for helping with the identification.

ACTIVITY. Nocturnal ☾ Diurnal ☀

HABITAT. Trees/canopy 🌳

Shrubs/grassland 🌿 Ground/leaf litter 🍂



MADIDI JUNGLE
<http://www.madidijungle.com/>



FROGS OF THE MADIDI JUNGLE ECOLODGE

A FIELD GUIDE

FROGS OF THE MADIDI JUNGLE ECOLODGE

MAURICIO PACHECO SUAREZ



A POCKET FIELD GUIDE



Smooth-sided Toad *Rhaebo guttatus*
 A large toad, especially common around the lodge. The smooth skin of the back and flanks is its most distinctive characteristic.



Lesser Toad *Rhinella major*
 An uncommon toad, but easily visible around the lodge. Similar to cane toad, but smaller.



Cane Toad *Rhinella marina*
 The biggest toad species, some specimens reaching more than 20 cm. Very common, but most frequently spotted as little juveniles in the leaf litter.



South American Common Toad *Rhinella cf. margaritifera*
 Uncommon in the area, but typically found in leaf litter. Recognizable by the leaf-shaped silhouette and long crests in adult females.



La Paz Robber Frog *Oreobates cf. crunalis*
 Part of a species complex. This little and very variable frog is a common inhabitant of the leaf litter.



Rio Mamore Robber Frog *Pristimantis fenestratus*
 Very common in the leaf litter, riversides, and around the lodge. Males call day and night from the ground or perched on bushes.



Reichle's Robber Frog *Pristimantis reichlei*
 Uncommon, but probably passes unnoticed. More arboreal than other robber frogs in the area, but quite similar externally.



Unidentified Robber Frog *Pristimantis* sp.
 Found only once near a permanent pond, this robber frog has not been identified yet and possibly represents an undescribed species. It's most similar to *Pristimantis tofti*, another poorly known amazonian frog.



Spot-legged Poison Frog *Ameerega picta*
 Very common around the lodge, and even among the cabins. Males call from exposed places in the leaf litter, especially early morning and late afternoon, year round.



Giant Gladiator Treefrog *Boana boans*
 The biggest treefrog of this genus in the area. Inhabitant of the canopy. Most commonly spotted during the rainy season when come down to the ground to mate.

ROBBER FROGS
DENDROBATIDAE
POISON FROGS
HYLIDAE
TREE FROGS
CRAUGASTORIDA



Map Treefrog *Boana geographica*
 A very common frog, that calls from trees and bushes since late in the afternoon.



Basin Treefrog *Boana lanciformis*
 A big treefrog with a distinctive call. Commonly found in trees and bushes that grow at the side of small streams.



Steinbach's Treefrog *Boana steinbachi*
 Formerly known as *Hypsiboas fasciatus*, this endemic frog has received its new name recently. Found usually perched on small trees and bushes, is notably more common in the other side of rio Tuchi.



Acre Treefrog *Dendropsophus acraeanus*
 A small inhabitant of grass and bushes around permanent and ephemeral ponds. All the species of this genus are easy to found only during rainy season.



100 mm



Manaus Slender-legged Treefrog *Osteocephalus taurinus*
A very large treefrog. Common in the forest, around ponds and streams, and even into the lodge. Has a distinctive yellow and black iris.



40 mm

Rio Negro Snouted Treefrog *Scinax cf. chiquitanus*
Found perched on bushes and small trees in the forest, and around ponds where they congregate in big numbers during rainy season.



45 mm

Red Snouted Treefrog *Scinax ruber*
Explosive breeder. Found by hundreds around ponds and flooded areas during rainy season. Otherwise, uncommonly encountered in the forest, and even into de lodge.



37 mm



Freiberg's Forest Toadlet *Engystomops freibergi*
Very common in the area, this frog can be found in the leaf litter, and between the rocks of small streams.



82 mm



Bolivian White-lipped Frog *Leptodactylus bolivianus*
The biggest of various very similar frogs that can be found in the area. Uncommon, but can be spotted near de lodge, and in small streams. Males of this frog has traditionally been confused with Leptodactylus labyrinthicus wich, as it's now confirmed, don't occur in the country.



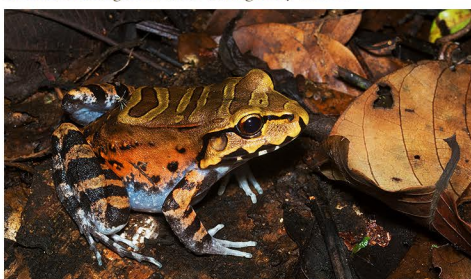
55 mm

Madre de Dios Thin-toed Frog *Leptodactylus didymus*
Similar to Leptodactylus bolivianus, but smaller and more strongly associated to ephemeral and permanent ponds.



48 mm

Fuscous Foam Frog *Leptodactylus fuscus*
Uncommon in the area. Normally found in the ground of flooded and degraded areas during rainy season.



97 mm

Knudsen's Thin-toed Frog *Leptodactylus knudseni*
Typically found at the base of large ceiba trees, sitting near its burrows dug in the ground, and hidden between the roots, rocks and leaf litter.



44 mm

Common Thin-toed Frog *Leptodactylus leptodactyloides*
Locally common. Found hidden in the ground near ponds, or at the edge of the forest.



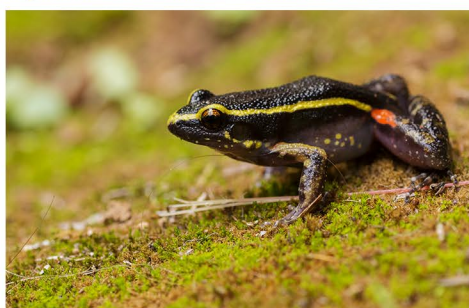
82 mm

Peru White-lipped Frog *Leptodactylus rhodonotus*
Uncommon in undisturbed habitat. Found in piedmont, at the edge of small streams, pond and lagoons.



32 mm

Unidentified White-lipped Frog *Leptodactylus sp.*
An unidentified little frog in the Leptodactylus wagneri-podicipinus species complex, a group of externally similar frogs, very difficult to differentiate. Uncommon in leaf litter.



60 mm



Painted Antnest frog *Lithodites lineatus*
Common in the leaf litter around the lodge. Associated to leaf cutter ants nests, inside of which they take refuge and even deposit their eggs when flooded.



43 mm

Bolivian Bleating Frog *Hamptrophryne boliviana*
A typical inhabitant of the leaf litter of primary forest, found regularly in the paths around the lodge.



55 mm

Tiger-striped Leaf Frog *Callimedusa tomopterna*
Uncommon around permanent ponds, lagoons, and sometimes near clay licks.



75 mm



Fringed Leaf frog *Cruziohyla craspipedopus*
A rarely seen frog that lives in the canopy and comes down solely to lay eggs in water filled hollow logs and ephemeral ponds. Found in 2017, in one specific spot near the lodge, this represent the first record of this magnificent species in Bolivia.



49 mm

Jaguar Leaf Frog *Pithecopus palliatus*
Uncommon. Only found near ponds and lagoons with abundant grass and bushes.



84 mm

Black-eyed Leaf Frog *Phyllomedusa camba*
Common around permanent and temporary ponds. Males call from half height trees.



83 mm



White-lined Leaf Frog *Phyllomedusa vaillanti*
Common in forest around small streams and large permanent ponds. easily distinguishable by the rows of white tubercles on the sides of the back.